

# Morpac Motor Operator Type MOE-1000

The Morpac Motor Operator, Type MOE, is an electrical all weather switch operating device. The standard heavy gauge aluminum cabinet has three hinged, removable doors for easy access to all wiring and components. (Stainless steel cabinets are available as well). The front door padlocks shut. Opening the front door allows access to the latches for the side doors. A large, bolted conduit entrance panel is located on the bottom of the cabinet. Morpac's upper decoupler is used to physically separate the motor operator from the vertical operating pipe. The decoupler can be padlocked in either the open or closed position.

Morpac uses a single stage, heavy duty, sealed cycloid reducer for long maintenance free life and extreme duty applications. The open and close limit switches are infinitely adjustable up to 360 degrees. Operating time is from 6 to 12 seconds\* for typical 180 degree rotation. Full local control with pushbuttons and indicator lights are standard. Also standard are a counter, thermostatically controlled heater and 6 infinitely adjustable auxiliary switches which can be set up as form "c" or "a" and "b" types. Additional auxiliary switch stages are available. Operating voltages available are 120 or 240 VAC and 24, 48, 125 or 250 VDC. 24 and 48 VDC units can be provided with batteries and chargers if desired.



*Morpac MOE 1000*

## **Specifications**

Voltages, DC	24, 48, 125 and 250
Voltages, AC	120 and 240
Operating time	6 to 12 seconds*
Torque	20,000 pounds-inch
Rotation	Field Reversible, Up to 360 degrees
Motor	3/4 HP

## **DC Motor Current Draw**

<u>Voltage</u>	<u>Full Load</u>	<u>Locked Rotor</u>
24	30A	191A
48	14A	95A
125	5.2A	64A
250	2.65A	32A

\*Faster times are available but not recommended for switches 115 kV and above.

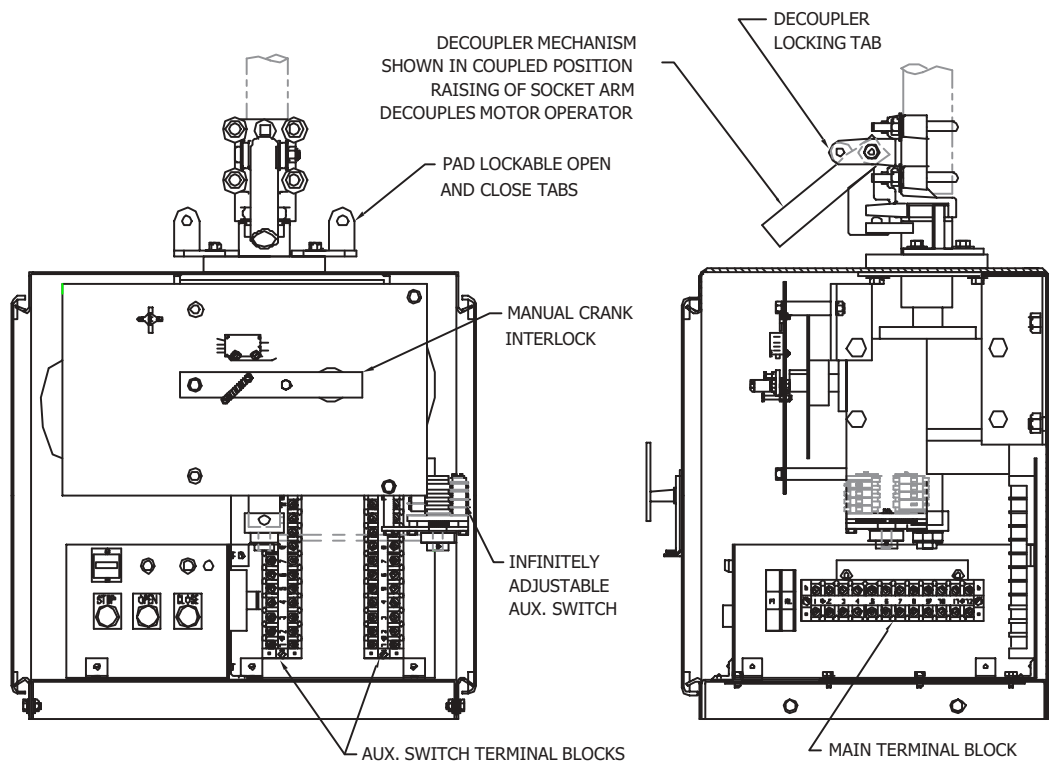
# Morpac Type MOE 1000

## COMPONENTS AND FEATURES

### STANDARD FEATURES

- 100 watt thermostatically controlled strip heater.
- 22 millimeter open, close and stop pushbuttons.
- Super bright led position indicator lights.
- Infinitely adjustable auxiliary switch stages, wired to terminal block.
- Removable auxiliary operating crank handle, electrically interlocked with control.
- Hinged removable pad lockable front door.
- Hinged removable side doors.
- 5052 H32  $\frac{1}{8}$  inch aluminum enclosure
- Large conduit entrance plate (4.5 x 13.75) for easy wiring access.

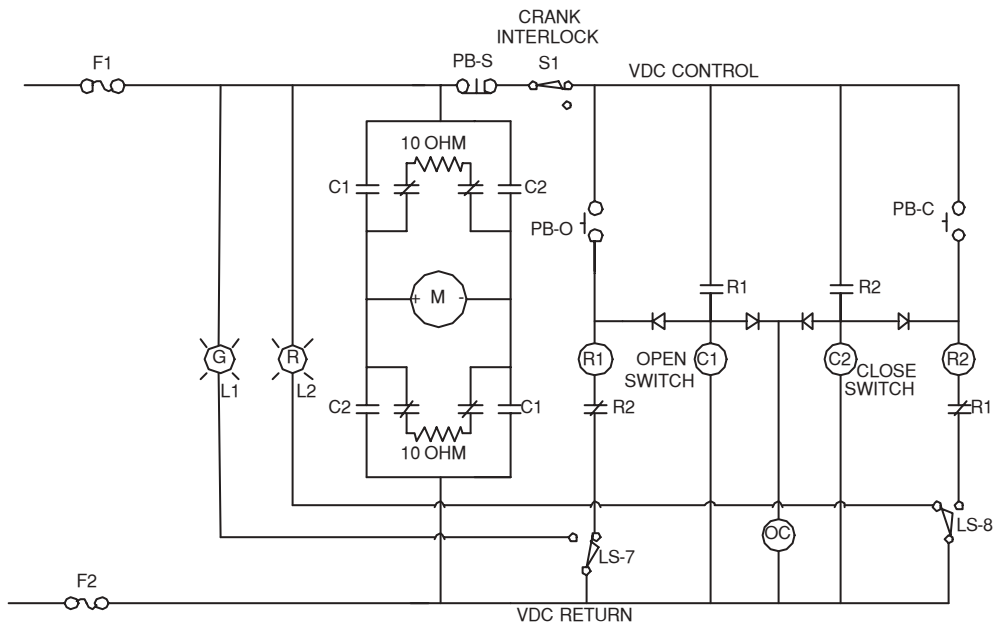
NOTE: IF MOTOR OPERATOR IS IN THE OPPOSITE POSITION OF THE AIR SWITCH THE DECOUPLER WILL PREVENT COUPLING TO THE MOTOR OPERATOR UNTIL BOTH ARE SYNCHRONIZED



# Morpac Type MOE 1000

## ELECTRICAL CONNECTIONS

Incoming electrical connections are made on the main terminal board. The schematic shown below is for general information only. Wire per the schematic supplied with your motor operator.



- R1 RELAY, CONTROL, OPEN SWITCH, 10K OHM COIL
- R2 RELAY, CONTROL, CLOSE SWITCH, 10K OHM COIL
- C1 CONTACTOR, MOTOR, OPEN SWITCH, COIL 5.6K OHMS
- C2 CONTACTOR, MOTOR, CLOSE SWITCH, COIL 5.6K OHMS
- OC OPERATION COUNTER
- M MOTOR 3/4 HP
- LS LIMIT SWITCH, 8 POLE ADJUSTABLE (2),  
(SHOWN WITH SWITCH CLOSED)

