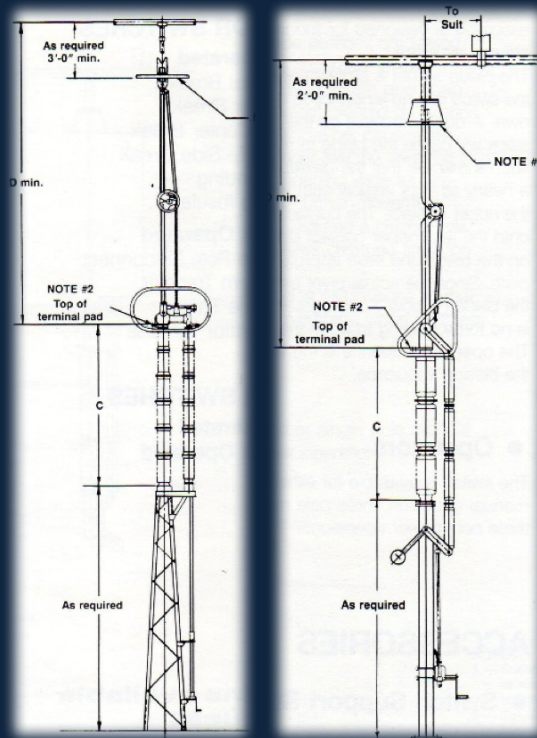


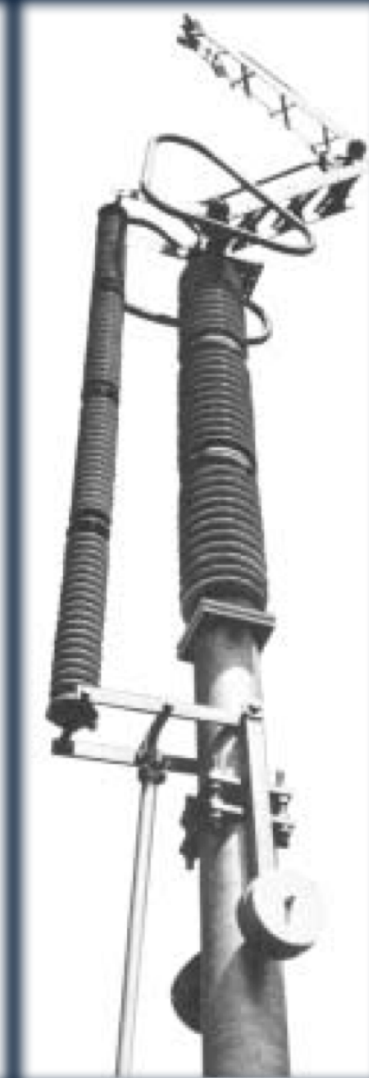
# VERTICAL REACH SWITCHES

## VR1 AND VR2

A space saving vertical reach switch for application in high and extra high voltage substations. The vertical reach switch, utilizing a vertical rather than horizontal separation, provides substation designers with a means to reduce space requirements by as much as thirty-five percent. The MEMCO vertical reach switch is of the semi-pantograph design. It may be installed either directly below and in line with the overhead bus or on the diagonal at the point of bus crossover. The terminal pads can be arranged so that the lower bus may extend in any of four directions; in line with or perpendicular to the switch.



Type VR1



Type VR2

	VR1	VR2
Primary Material	Aluminum	Aluminum
Current Range	3000A – 4000A	3000A
Voltage Range (nom)	500kV – 765kV	230kV – 345kV

See Table of Ratings for Complete Details